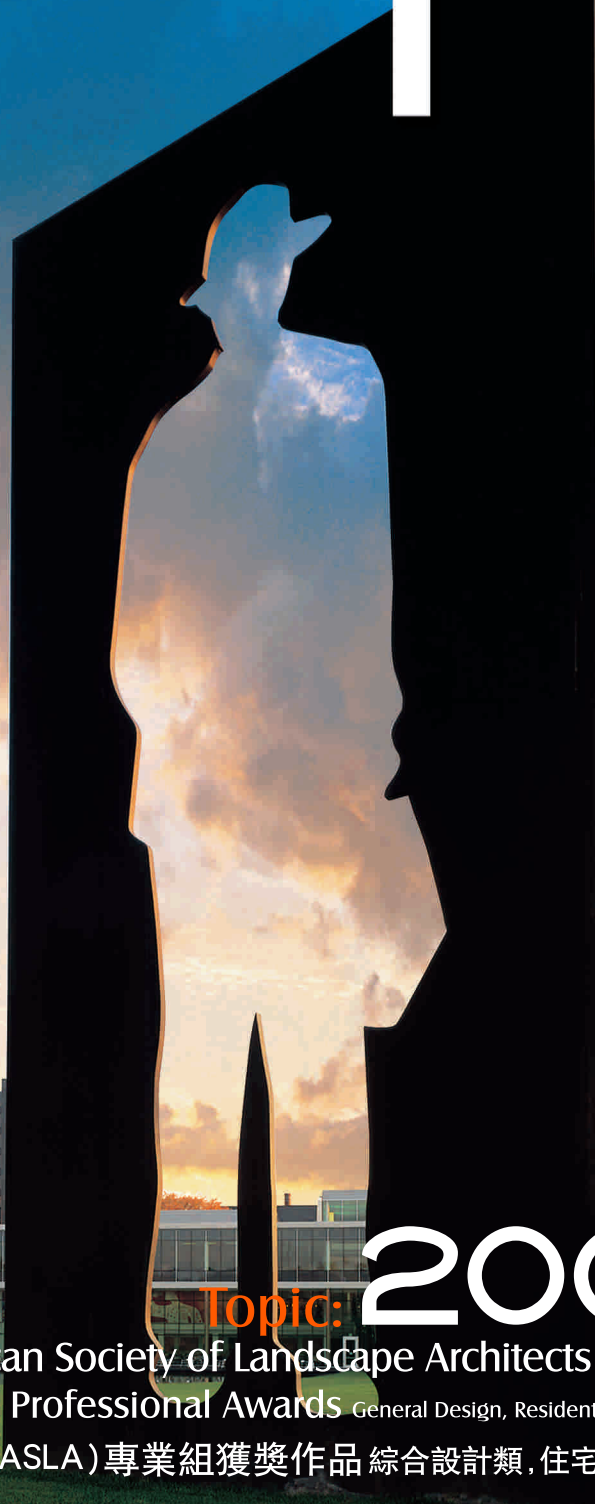


international

國際新景觀

# new landscape

2 / 2006 No.1 Price: AUD 16 / USD 12 / RMB 58



# 2005

Topic:

American Society of Landscape Architects (ASLA)

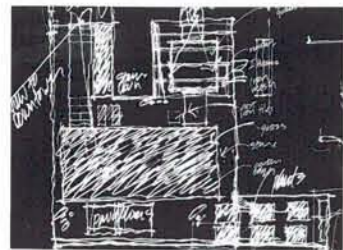
Professional Awards General Design, Residential Design

美國景觀設計師協會 (ASLA) 專業組獲獎作品 綜合設計類, 住宅設計類

ISSN 1833-0673



9 771833 067003 >



住宅設計類榮譽獎  
RESIDENTIAL DESIGN AWARD OF HONOR

# Private residential garden 私家住宅庭園

Site: Minneapolis, MN  
Design: oslund.and.assoc., Minneapolis, MN

位于10層樓高度，由1914年建造現已廢棄的閣樓改建而成。從三面將原有和人造的建築相統一。第四面是密西西比河廣闊的視野和明尼亞波利斯的美景。從原有設計的保守風格和Robert Ryman的作品中吸取靈感，設計師決定外部也一定包含相同的配色感和純淨度。陰影的層次、結構的不同和運動的微妙顯現眼前。任一時間、任一角度都體現其設計獨特的綜合性。設計難點是內外風格的一致。閣樓的建造和風景的和諧搭配是設計的關鍵。意境源于日本傳統庭園設計，而採光和結構都堪稱非傳統庭院式住宅的先例。

占頂部65%的是簡樸的草地和植被覆蓋，提供了意想不到的驚喜，而建築物的高度又要求所有設計要素都要抬高10層樓的高度。結構和材料都要經受住明尼亞波利斯的不良環境的考驗。屋頂的花園被分成意想不到的兩層。第一層具有審美學的優點。建築師的設計和原有風景的結合產生了一種遠離城市喧嘩的寧靜。結合現代的流行元素和歷史氣息，形成了獨有的風格。綜合自然界和周圍人工的優點。門外梯形用草坪充實大部分空間，但不乏留有種植鮮花和香草的區域。第二層具有生態學設計的長處。雨水被集流灌溉草坪。過多則被引入貯水池。這個偏房頂的花園不失為一個審美學和生態學完美結合的典範。

The space is located on the 10th floor penthouse level of a loft conversion of an abandoned warehouse built in 1914, which is a national historic landmark. The space balances living materials and man-made materials within a precinct bounded by walls on three sides. On the fourth side are an expansive view of the Mississippi River and a postcard view of downtown Minneapolis. Inspired by the owner's love of minimalism and the complexity intrinsic to the works of Robert Ryman that grace the client's interior walls, the landscape architect determined that the exterior rooms must contain the same sense of nuance and purity. As one examines a painting by Ryman, the initial mental reflex may be to question how anything so plain can contain anything approaching complexity. This rich interior-exterior relationship is accomplished with an acute dedication to the subtle detail found in the Japanese garden tradition. This project speaks to a subtle combination of aesthetics and ecological design.

By creating a pristine lawn and planting modules that occupy 65% of the roof area, the landscape architect provided an unexpected delight within the urban condition. There was not a lack of challenges. The height of the building required most of the components of the design to be craned up 10 stories. The design elements needed to withstand the extreme weather conditions of a Minneapolis rooftop year-round. All of the inner mechanical and electrical components of the design had to be incorporated into the existing roof structure. The rooftop garden is an unexpected delight on two levels, the first level being aesthetic. To add a sense of warmth to the space, yet retain the industrial feel, the landscape architect chose to utilize Corten steel to create a floating wall plane that would incorporate an ikebana shelf and a water feature. The second level is that of ecological design. Rainwater is collected and stored for the irrigation of the lawn. Excess rainwater can also be retained in the same reservoirs, helping to decrease stormwater runoff. Water can then be wicked up through the planting medium to the turf, which extracts moisture as needed. This penthouse roof garden is an excellent example of creating a usable space for intimate or large gatherings that not only shows the finest attention to aesthetic detail, but also embraces the need for thoughtful ecological design in stormwater collection and reuse.

